

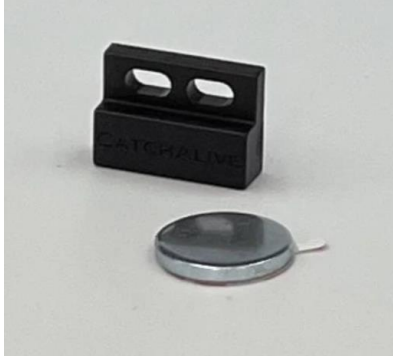
Mounting Manual - TearOff Magnet

This installation guide is suitable for traps where the magnet or trap alarm cannot be mounted on the trap door.

CatchAliveOne can also be used without magnet on other types of traps such as wooden box traps. On these traps CatchAliveOne is mounted directly on the trap door and measures the angle of the trap door.

Further instructions can be found at www.catchalive.com - Manuals.

1. Content



2. Mounting of self-adhesive metal disc



Ensure a clean surface of the trap alarm before attaching the metal disc.

3. Placement of magnet



4. App setup

Follow the guide "Quick Guide CAOne - Live Catch Traps".

Remember to set trap type to "Magnet tear off live catch" and trap status to "4 times daily".

Press "Update trap".

Trap type - detection principles in the app:

For more information on assembly etc. go to www.catchalive.com

Magnet detection live catch: CatchAliveOne is mounted on the trap, magnet is mounted on the trap door or as a tear-off magnet.

Trap door detection live catch: CatchAliveOne is installed directly on the trap door and measures the angle of the trap door.

Drop trap live catch: CatchAliveOne is mounted upright on the side of the trap and measures the angle of the trap.

Snap trap: CatchAliveOne is mounted on the trap and measures the forces from triggering the trap.

Snap trap: (magnet detection): CatchAliveOne is mounted on the trap with a special bracket and magnet. Detects open/closed.

Mole trap: CatchAliveOne is mounted on the trap and measures the forces from triggering the trap.

Mole trap (V-trap): CatchAliveOne is mounted on the trap with special fittings. Detects open/closed.

GoodNature: CatchAliveOne is clicked onto the trap with the GoodNature bracket and measures the force from triggering the trap.

Boar detector: CatchAliveOne is mounted in/on the feed drum. Detects when the feed drum is activated and changes direction.

Feeder monitor: CatchAliveOne is installed in the feeder barrel with the "CatchAliveOne mounting kit for feeder monitor". Detects the feed level in the feeder barrel.

Please note the following when operating CatchAliveOne:

- Do not immerse CatchAliveOne Device in water or any form of liquid.
(Device complies to IP65)
- Do not drop, throw or kick CatchAliveOne Device as this may damage mechanical functions.
- We recommend using 2 x Energizer Ultimate Lithium AA 1.5V/VARTA Ultra Lithium AA batteries in the CatchAliveOne Device. Same battery type as supplied with the CatchAliveOne Device.
(These batteries last longer, do not leak battery acid, and work optimal below freezing temperatures.)